

Ceramic Starter Power Resistors

High Starter Power Suitable for Application Loads Involving Brief Current Surges



► **Preview**

DST Power Resistor Construction:

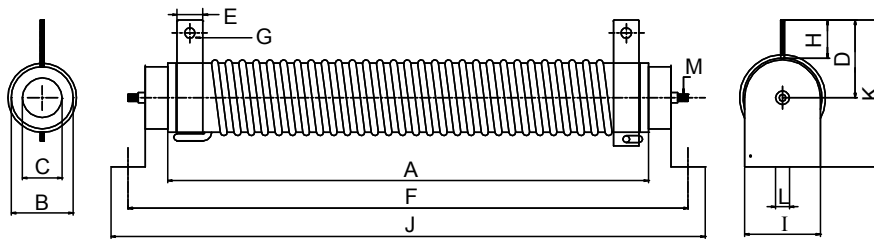
- A tubular ceramic insulator has a fixed number of windings and is wound with heavy alloy wire as a resistance element. The staggering wound is made according to the desired resistance value, followed by the placement of the component mounts.
- Metal parts are heavily plated to prevent oxidation at high operating temperatures and to prevent corrosion. DST's high power rating (500W~1000W) and low resistance value (0.5Ω-7Ω) provide applications high starter power and capacity.
- This power wirewound resistor is high temperature-resistant, dissipates heat well, has a low temperature coefficient that varies in direct proportion, and is suitable for application loads involving brief current surges.

Applications:

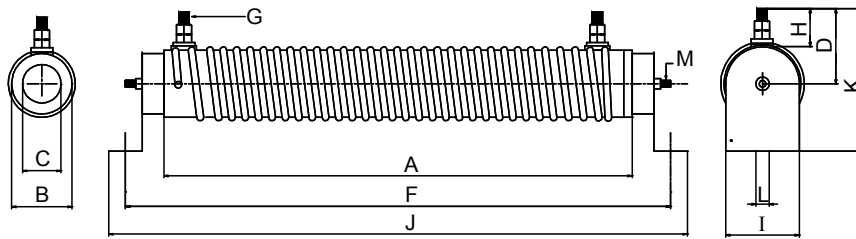
- Typical applications for power strater resistors in motor starters, load measurements, industrial machinery, electric distribution, dynamic braking, load dumping, current limiting, instrumentation, and automation control installations.
- Due to the set number of windings on the ceramic form, the resistance value range is relatively low. Tolerance is ±10% and this product is available in various shapes or in resistance boxes.

The DST Series is RoHS compliant and lead free. For non-standard technical requirements and special applications, please contact us.

Dimensions



Current Surges Power Resistor (DST)500W Dimensions

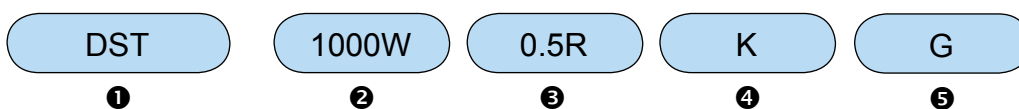


Current Surges Power Resistor (DST)600W - 1000W Dimensions

Wattage Rating	Dimensions(mm)												Resistance Range(Ω)	
	A	B	C	D	E	F	G	H	I	J	K	L		Weight
500W	280	40	23	45	15	326	6	22	34	346	85	8	970/g	3.5 Ω -7 Ω
600W	300	44	26	50	15	342	8	32	34	362	90	8	1277/g	0.5 Ω -3 Ω
1000W	420	48	30	56	15	470	8	32	40	490	105	9	1887/g	0.5 Ω -3 Ω

Notice: All dimensions might be changed or modified, please refer to last updating specification.

How to Order



❶ Part Number: DST

❷ Rated Power (W): 500W~1000W

❸ Resistance Value (Ω): Indicates resistance value in units of ohms.

❹ Resistance Tolerance (%)

Code	Resistance Tolerance
K	$\pm 10\%$

❺ Assembly Method (%)

Code	Assembly Method
C	Clip Mount.
G	Horizontal Mount.
N	No Mount.
Z	Vertical Mount.

[Back to 1st Page - Ceramic Starter Power Resistors \(DST\)](#)